



GRANDMOTHER'S FLOWER GARDEN TABLE RUNNER

With Trace 'n Create Quilt Templates-Grandmother's One Patch Collection
by Nancy Zieman
Approx finished size 21-1/2" x 36-1/2"

Create a traditional-looking Grandmother's Flower Garden Table Runner with one template and no Y-Seams! Here's the yardage for the table runner as shown or you be the designer and choose your own fabrics.

SUPPLIES

Trace 'n Create Quilt Template-Grandmothers One Patch Collection
Nine vintage reproduction cotton quilting fabrics:

- 1/8 yd. or one fat eighth blue print
- 1/8 yd. or one fat eighth yellow print
- 1/8 yd. or one fat eighth orange print
- 1/4 yd. or one fat quarter green print
- 1/4 yd. or one fat quarter gold print
- 1/4 yd. or one fat quarter purple print
- 1/4 yd. or one fat quarter red/yellow print
- 1/4 yd. red print, also used for sashing and binding
- 3/8 yd. black print, also used for borders

Backing Fabric: 2/3 yd. or 24" x 38"
Batting: 2/3 yd. or 24" x 38"

STEPS (Note: All seam allowances are 1/4")

1. Trace and cut Faux Hexagons and Finishing Pieces

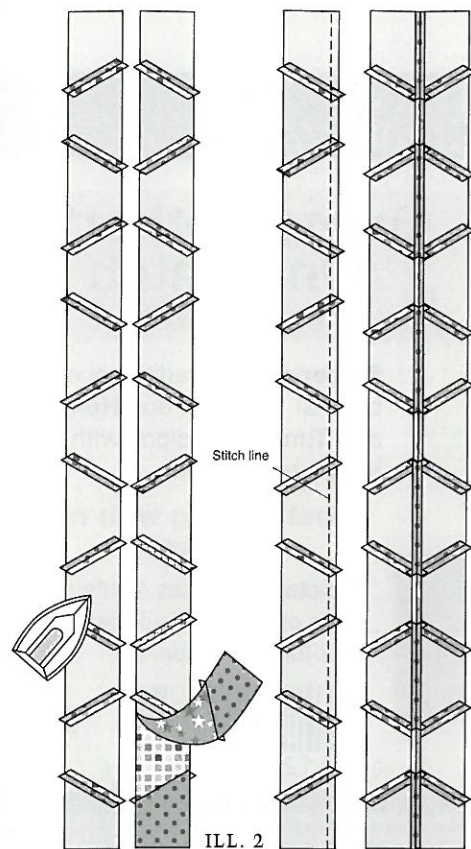
Follow the Trace 'n Create Quilt Template Grandmother's One-Patch Collection instructions. Using the 2" Hexagon, trace and cut the following pieces from 2-1/4" crosswise strips.

- blue print: 2 faux hexagons and 4 finishing pieces
- yellow print: 2 faux hexagons and 4 finishing pieces
- orange print: 5 faux hexagons and 2 finishing pieces
- green print: 13 faux hexagons and 2 finishing pieces
- gold print: 12 faux hexagons
- purple print: 10 faux hexagons and 4 finishing pieces
- red/yellow print: 12 faux hexagons
- red print: 4 faux hexagons
- black print: 12 faux hexagons

2. Layout Design

Layout Faux Hexagon shapes in eight columns to create the Grandmother's Flower Garden design as shown. Position the Finishing Pieces at the top and bottom of the rows. (ILL. 1)

Note from Nancy: Label the columns, 1-8, for ease of assembly. (ILL. 1)



ILL. 2



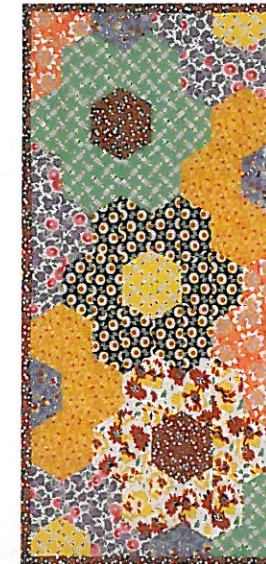
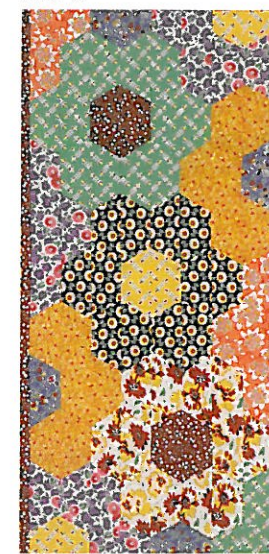
ILL. 1



3. Stitch Pieces

Follow the Trace 'n Create Quilt Template Grandmother's One-Patch Collection instructions and stitch pieces together creating eight separate columns. Press seams open. Stitch eight columns together to make center patchwork. Press seams open. (ILL. 2)

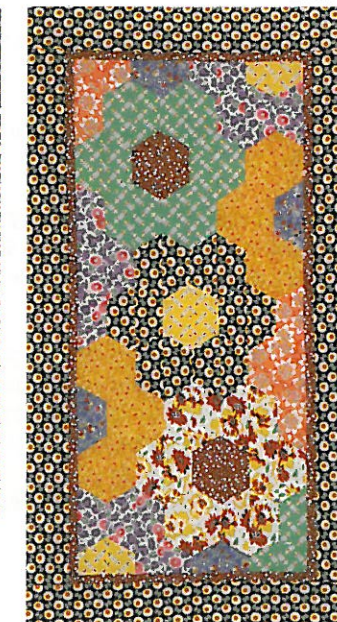
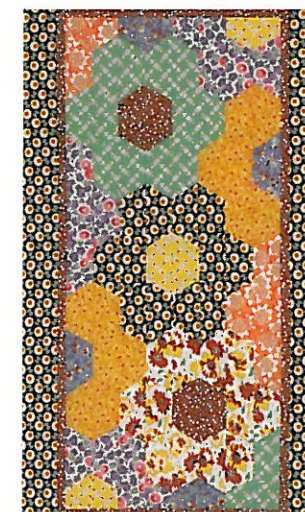
ILL. 3



4. Add Sashing and Borders.

Cut four 1" crosswise strips from red sashing fabric. Trim two lengths of the sashing to equal the measurement of the long edge of the center patchwork. Stitch strips to long edges of the center patchwork. Press seam allowances toward sashing. Trim two lengths of sashing equal to the center block short edge. Stitch to short sides of the center patchwork. Press seam allowances toward borders. (ILL. 3)

Cut four 3" crosswise strips from black border fabric. Trim two lengths to equal the long edge of the center block with sashing. Stitch to long edges of the center block. Press seam allowances toward border. Cut two lengths border fabric to equal the short edge of the center block with sashing. Stitch to short edges of the center block. Press seam allowances toward borders. (ILL. 4)



ILL. 4

5. Batting, Backing and Binding.

Cut batting and backing fabric to equal the rectangular size of the quilt top. Layer the top batting and backing; pin. Quilt layers together using your favorite quilting methods.

6. Cut four 2-1/2" crosswise strips from the red binding fabric. Use your favorite binding techniques, sew the strips together and stitch binding to outer edges of the quilt.